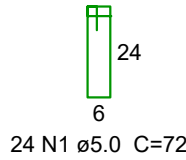
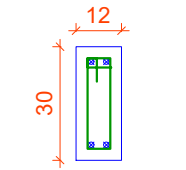


P1

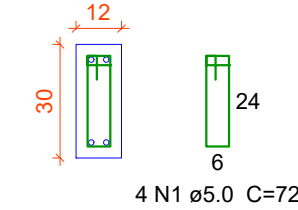
VIGA SUPERIOR - L2

ESC 1:20



VIGA BALDRAME - L1

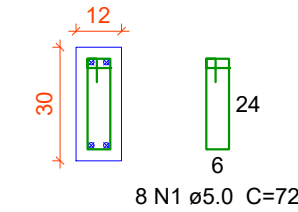
ESC 1:20



P4

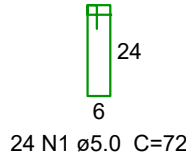
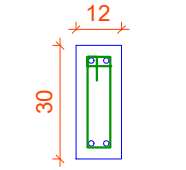
OITÃO COBERTURA - L3

ESC 1:20



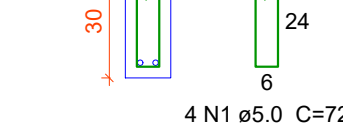
VIGA SUPERIOR - L2

ESC 1:20



VIGA BALDRAME - L1

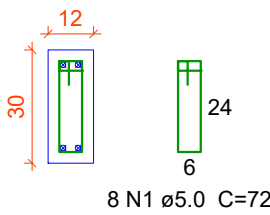
ESC 1:20



P2

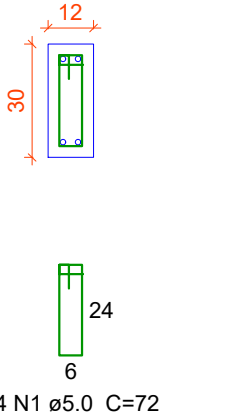
OITÃO COBERTURA - L3

ESC 1:20



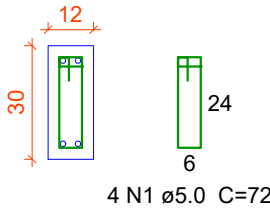
VIGA SUPERIOR - L2

ESC 1:20



VIGA BALDRAME - L1

ESC 1:20



Relação do aço

P1

P4

P2

P3

AÇO	N	DIAM	Q	UNIT (cm)	C.TOTAL (cm)
CA60	1	5.0	128	72	9216
CA50	2	10.0	16	VAR	VAR
	3	10.0	8	277	2216
	4	10.0	8	318	2544
	5	10.0	8	87	696

Resumo do aço

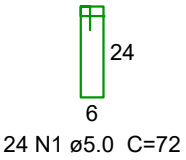
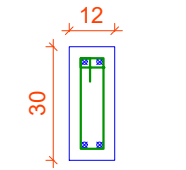
AÇO	DIAM	C.TOTAL (m)	PESO + 10 % (kg)
CA50	10.0	70	47.4
CA60	5.0	92.2	15.6
PESO TOTAL			
CA50	47.4		
CA60	15.6		

Vol. de concreto total (C-25) = 0.53 m³
Área de forma total = 12.26 m²

P3

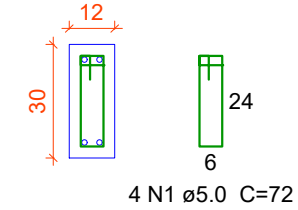
VIGA SUPERIOR - L2

ESC 1:20



VIGA BALDRAME - L1

ESC 1:20



PROJETO ESTRUTURAL - CASA DE MAQUINAS



PREFEITURA MUNICIPAL
TRÊS BARRAS DO PARANÁ

OBRA:

REFORMA E AMPLIAÇÃO DO CENTRO DE EVENTOS - SALÃO

ENDEREÇO:

TRÊS BARRAS DO PARANÁ

DESENHO:

CAMILA THEISEN

CONTEÚDO:

PRUMADA DE PILARES

DATA:

DEZEMBRO/2025

PROPRIETÁRIO:

PREFEITURA MUNICIPAL DE TRÊS BARRAS DO PARANÁ

PRANCHA:

02/03

PREFEITURA MUNICIPAL DE TRÊS BARRAS DO PARANÁ
CNPJ.: 78.121.936/0001-68

CAMILA CRISTINA THEISEN
ENG. CIVIL - CREA: PR-184.633/D